

# **CVE ENHANCED COMMUNITY POLICING & ACCELERATING CVE**

**STEVAN WEINE M.D.  
PROFESSOR OF PSYCHIATRY  
UNIVERSITY OF ILLINOIS AT CHICAGO**

**START ANNUAL MEETING  
SEPTEMBER 18-19, 2014**



# **U.S. CVE National Strategy on Countering Radicalization to Violence**

**BUILDING** safe, secure, resilient, crime-resistant communities.

**TRAINING**, information sharing, and adopting community-oriented law enforcement approaches

**APPLYING** community oriented policing practices that focus on building partnerships between law enforcement and communities.

**FOSTERING** community-led preventative programming to build resilience against violent extremist radicalization.

**“Community mobilization,**

**an essential part of the crime-fighting model, is particularly important when applied to populations that may feel targeted by society or the police. One goal with Muslim communities has been to converge their community-building efforts with those of the LAPD; by opening channels of communication and fostering trust, opportunities to improve police service to those communities would arise.”**

**- Chief Downing**

# Initial Research Questions

---

- 1.** How does community policing work to counter violent extremism and how might that be further enhanced through psychosocial preventive intervention strategies?
- 2.** What is community and family resilience to violent extremism in Muslim American communities under threat and how can it be enhanced through community policing approaches?
- 3.** How can criminal justice agencies and communities collaboratively develop policies, programs, and initiatives to enhance resilience in communities under threat?

**METHODS** A study of the LAPD and Muslim-American community in Los Angeles using ethnographic interviews and observations with the LAPD police officers and with community leaders, parents, and youth (n=100), and analysis using grounded theory and Atlas/ti 7.0 software.

- Stevan Weine (PI)
- Ahmed Younis (co-I)

# FINDING:

**CVE community policing differs from traditional CP, both structurally and operationally.**

Centralized in one unit of 25 officers that covers the entire city, rather than TCP with a Senior Lead Officers in each division.

One Quarterly Muslim Forum rather than 21 monthly Community Police Advisory Boards as part of TCP.

Introduces traditional and CVE enhanced components across a range of practice domains.

Practice Domains	Traditional CP Components	CVE Enhanced CP Components
Engage	Meet and establish friendly relations with persons of significant influence in their communities	Focused on Muslim American communities Focused more on willing and cooperative community leaders
Educate	Promoting knowledge and awareness of crimes, police work, and community resources.	Based on LE practitioner understanding of historical political, social cultural, media, and community factors Promoting knowledge and awareness of VE & CVE
Partner	Build mutual trust between LE and community service and advocacy partners Build interagency collaborations involving LE and non-LE gov.	Address trust undermined by historical and current traumas Put money in the bank for use in addressing future crisis
Problem Solve	Solve citizen's daily problems Follow through on promises Defuse conflicts between community and police Proactive joint problem solving Hosting events	Helping communities to assess level of risk of persons Informing communities about notifying law enforcement about inds. at risk Countering negative media attention
Risk Mitigation	Focused on gangs, trafficking, and other urban crime	Enhancing integration of immigrants & refugees Making the environment hostile to violent extremism Support the development of community led prevention
Organizational Change	Build capacities of community orgs./members	Capacity building among Muslim immigrant/refugee
Measure	Lack of emphasis on assessment	Partnering with academics with research and evaluation expertise

# ENGAGE:

## Dialogue & Information Sharing

“I believe in breaking bread. That means just sitting down and just eating together. And that diffuses a lot of issues right there. We work on commonalities versus on differences. Tolerance. Acceptance.”

- **community leader**

“So I think that's a two-way thing what the LAPD is doing. They are learning about our culture, and we are learning about other things. So there is a kind of mutual trust that's building. I think that's what is needed with the other communities.”

-**community leader**

# **PARTNER:**

## **Building Mutual Trust**

“At the onset, it was pretty rocky, partly because we were approaching communities that have really not been engaged in the past. We are approaching communities who look at government in general with kind of a mistrust. Their starting point are international and not necessarily local because these are immigrant communities who are also coming in with their own biases, with their own experiences that don’t necessarily translate. So at the onset when we try to bring some of the community groups with the government, it was almost as though they were speaking two separate languages, completely different languages.”

**-city government**

# ORGANIZATIONAL CHANGE:

## Capacity Building

“So while we are limited in our capacity in terms of program delivery what we have done is supported promoted community-based organizations, advocacy groups who are already doing this kind of group and what we have done is pushed those political wheels in a way that we do need to promote that kind of work.”

- city gov. liaison

“What we found was this project is so big we don’t have the capacity to do it. We don’t have the capacity to, in LA to give this class to 300,000 people.”

- community leader

# **FINDING:**

## **Partnership is necessary, but not sufficient for CVE.**

- ▶ The partnership is actually CVE prevention in making communities a part of the solution, rather than the problem.
- ▶ However, there should also be discrete prevention and intervention activities targeting multilevel changes in prioritized endpoints.
- ▶ In undertaking prevention and intervention, partnership allows for division of labor between community, law enforcement, and non-LE government.

# FINDING:

## CVE faces key challenges in program development.

### Program Models

- Establish a basis in sound theory and evidence to inform programs.

### Interventions Targeting Those At Risk

- Develop prevention and intervention components focused on those most at risk.

### Address Risk Environment

- Develop multilevel interventions that address environmental factors that explain risk

### Evidence of Effectiveness

- Gather evidence that evaluates the effectiveness of the program and its components.

# **FINDING:**

## **Pushback Against CVE**

**ADVOCACY:** CAIR, ACLU, Stop LAPD Spying Coalition.

- “...says that Muslims are more prone to violence than any other faith,”
- “The manufacturing of terror” through surveillance and media.

**ACADEMIC:** Prof. Sahar Aziz (Texas A&M)

- CP is “the ‘velvet glove’ covering the ‘iron fist’ of more military styles of policing.”

**COMMUNITY MEMBERS:** Some community leaders and members express deep distrust and reluctance to engage with law enforcement.

# FINDING:

Pushback to CVE appears multifactoral, widespread, and dynamic.

For some, CVE:

- Uses language that is primitive, developing, and not articulated in a clear way to the community.
- Is potentially harmful by reinforcing negative identities of Muslim Americans.
- Demonstrates a lack of respect and trust by LE/gov.
- Demonstrates that Muslims aren't being treated as equal citizens
- Exacerbates historical trauma from countries of origin
- Is based on misinformation spread by media and LE
- Is linked to perceptions of illegal/unconstitutional practices, especially related to surveillance and stings

# RESPONSES TO PUSHBACK

- ▶ Community-delivered prevention
- ▶ Involve non-LE government
- ▶ Focus on strengths of youth, families, community, culture
- ▶ Maximize transparency of LE
- ▶ Reign in questionable LE practices
- ▶ Do not focus on universal prevention
- ▶ Demonstrate benefits of engagement to community, not only in CVE

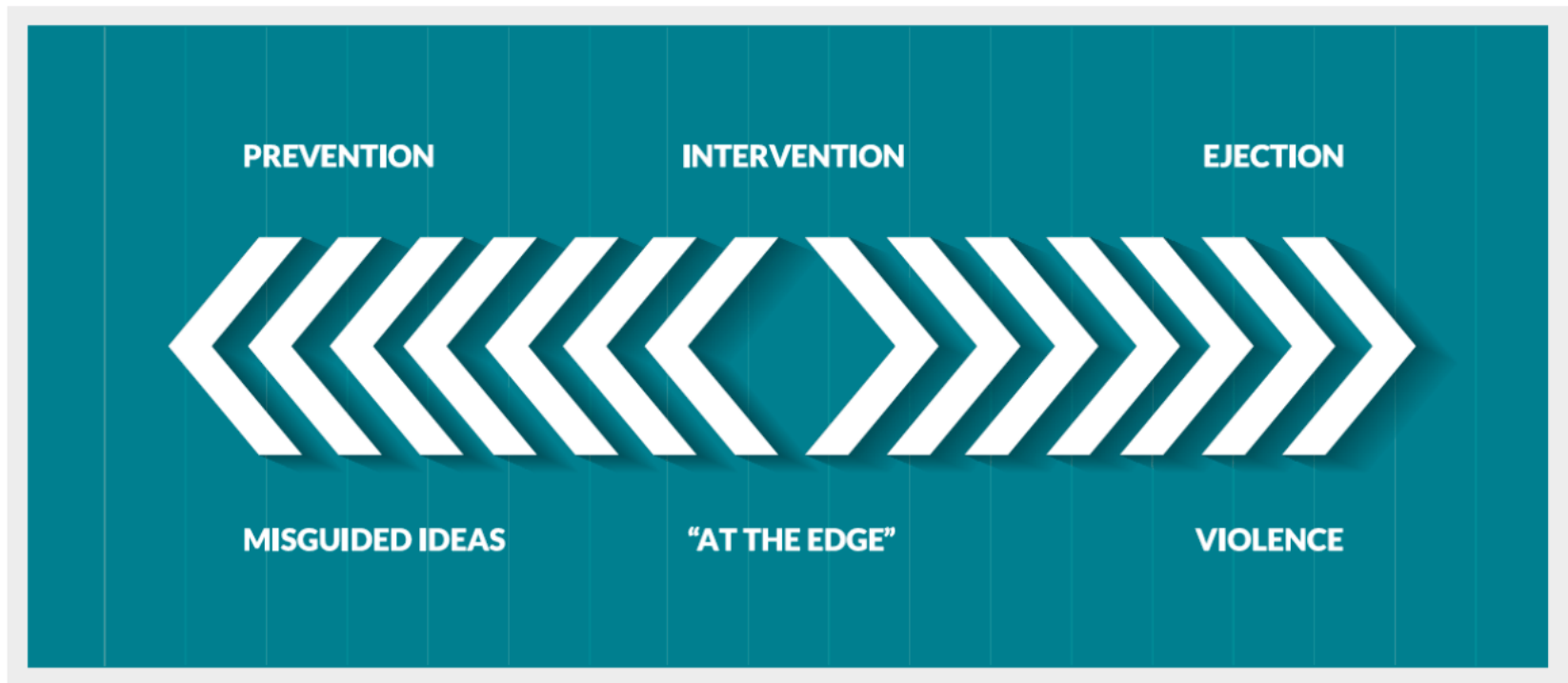
# FINDING:

**CVE should include targeted prevention and intervention activities that focus on enhancing protective resources.**

Levels	Protective Resources
<b>Youth and Family</b>	Parental Support for Youth Socialization Parental Talk with Youth Regarding Threats Youth Civic Engagement Youth Political Dialogue
<b>Community</b>	Islamic Education and Imam Network Community Support for Youth Socialization Understanding of Islam as a Peaceful Religion Youth Opportunities for Peace Activism Messaging to Challenge Legitimacy of Violent Extremism Youth Civic Engagement Youth Political Dialogue
<b>Government</b>	Empowering Critical Voices Support for Youth Community Services Support for Youth Leadership Training Support for Parenting and Parent Education

# Safe Spaces' PIE Framework

(COMMUNITY RESPONSES)



(MOVEMENT TOWARD/AWAY FROM VIOLENCE)

# CONCLUSIONS:

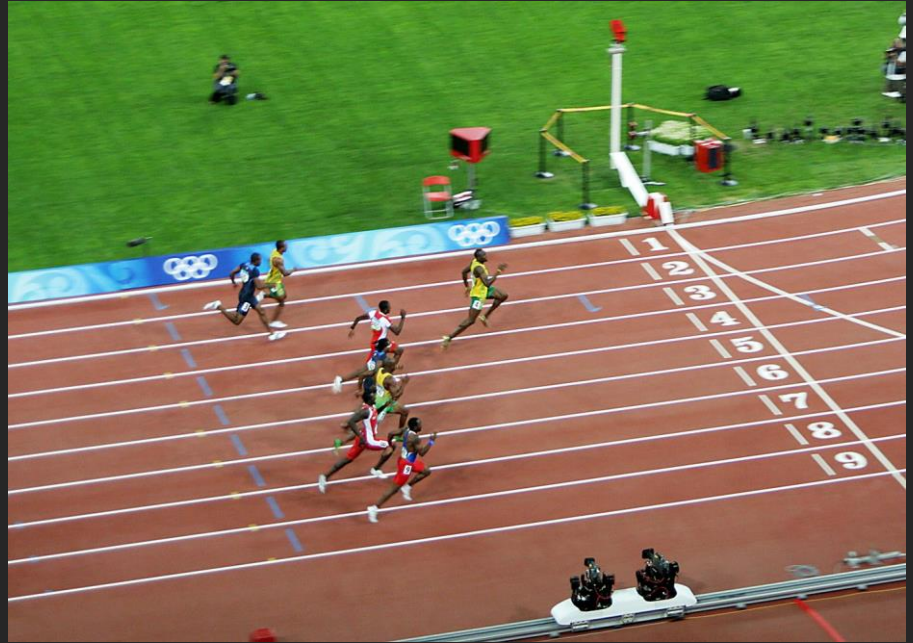
## Community policing in CVE...

**INCORPORATES** both traditional CP and CVE enhanced CP practices.

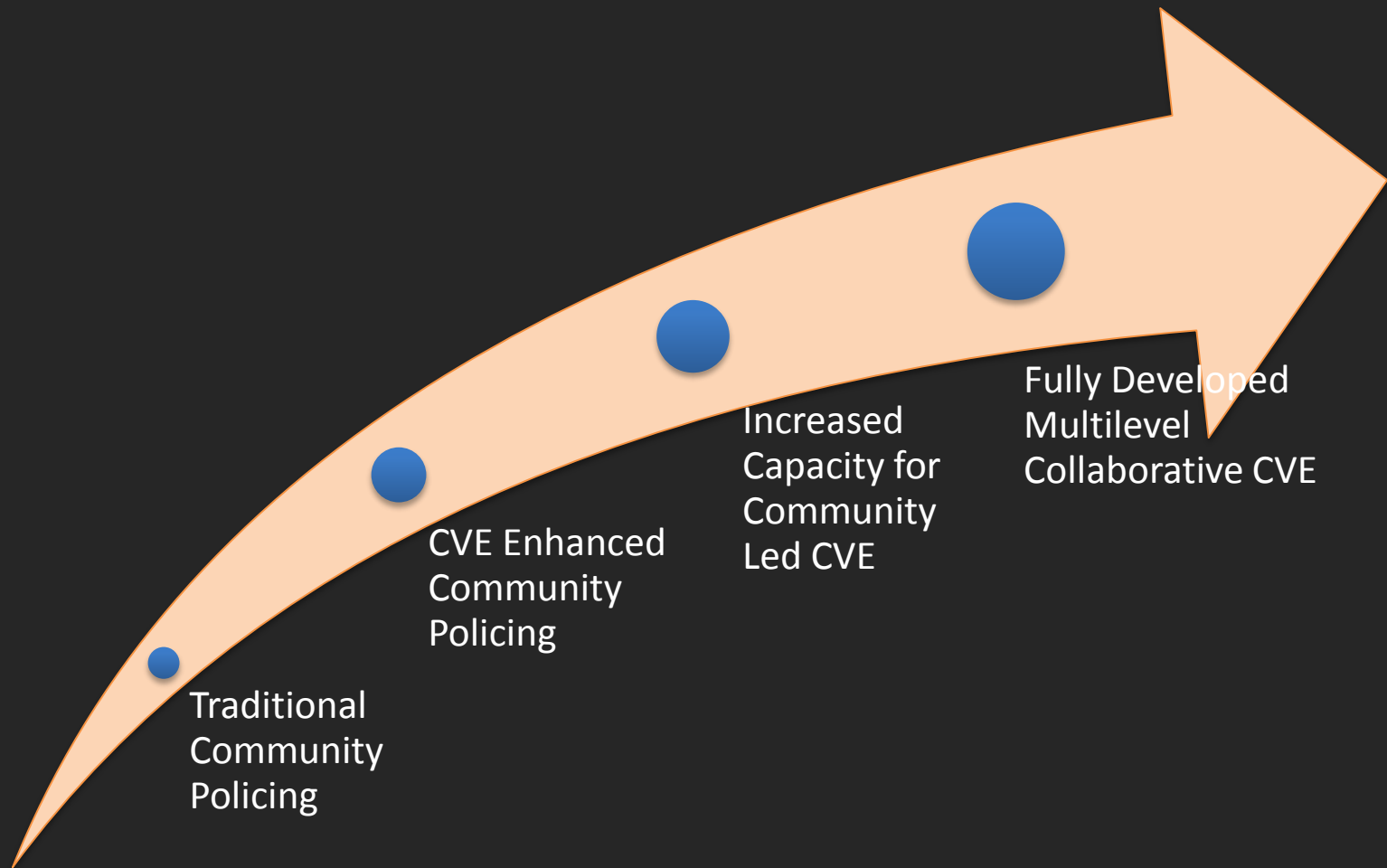
**PLAYS** a vital role in CVE through engaging the community and forming partnerships that pro-actively and mutually build trust, challenge misinformation, educate, promote transparency, defuse conflicts, open communication channels, solve daily problems, and capacity building.

**FACES** new challenges regarding program models, interventions targeting most at risk, addressing the risk environment, evidence of effectiveness, and pushback from the community.

# Accelerating CVE



# A CP Path to CVE



# **Build on CVE Successes**

---

## **Dearborn, MI**

- Promotes public safety without singling out ethnic groups

## **Los Angeles, CA**

- Community mobilization and enhanced civic engagement

## **Montgomery County, MD**

- Led by a public-private partnership with the local faith-based community and local law enforcement

## **Minneapolis-St. Paul, MN**

- Multi-ethnic approach, community awareness.

## **Australia**

- Publically available framework; Evidence-based decision making.

## **Canada**

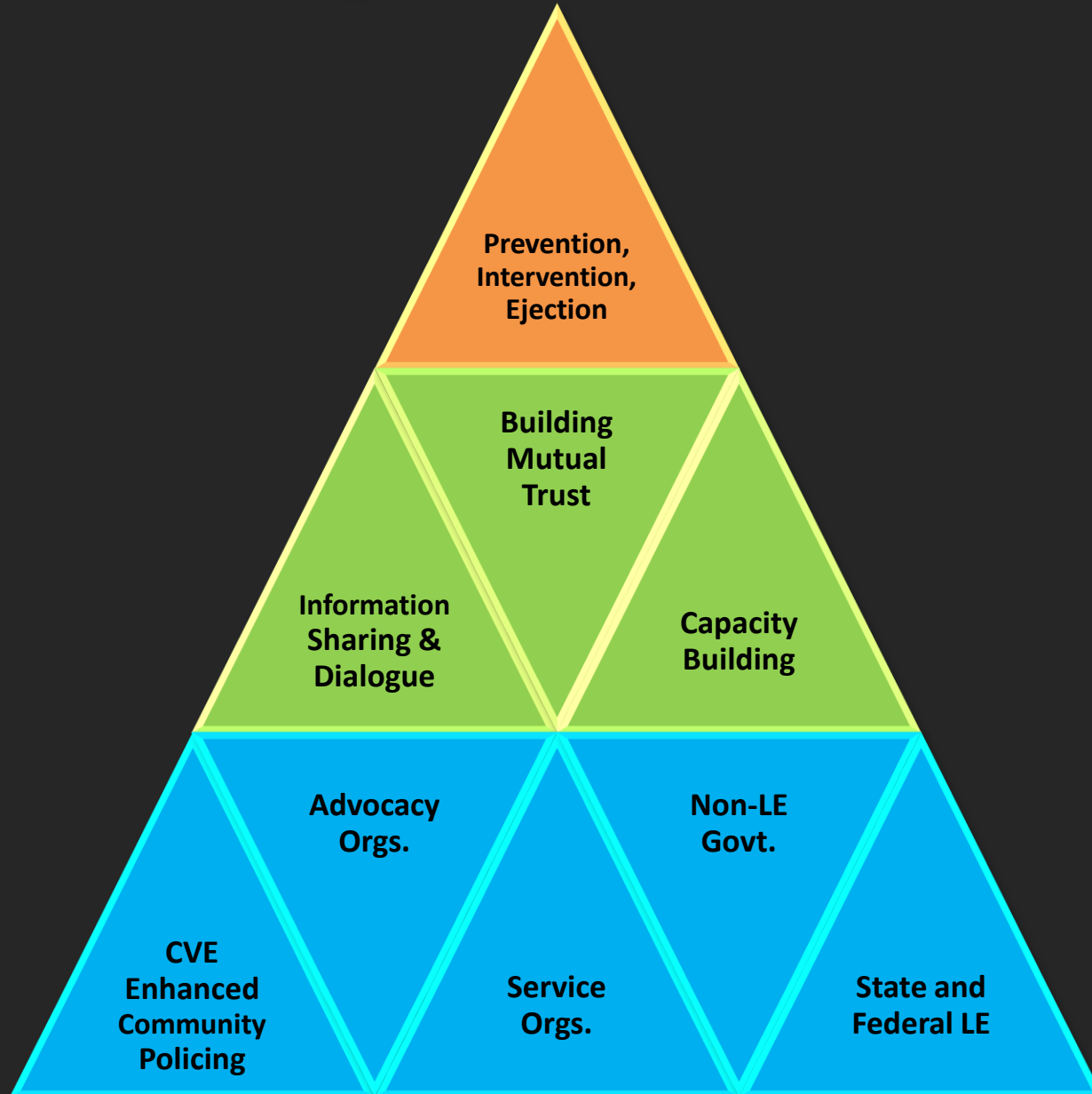
- Empowering communities through telling stories

## **Germany**

- Radicalization advisory center

# CVE Pyramid Model

---



# Prevention Program Levels

---

## 1° Universal Prevention

For general public not identified at risk (“Think Again, Turn Away”)

## 2° Selective Prevention

For sub-group at risk (mosque/community-based)

## 3° Indicated Prevention

For high risk group with some signs  
(imam/family intervention)

## Intervention/ Ejection

For ind. with fully  
manifested condition

# Key Questions for Developing CVE Programs:

Partnership

What kinds of partnerships facilitate CVE prevention?

Impact

What should CVE programs be doing to have an impact?

Effectiveness

How do we know if CVE programs are effective?

Implementation

How can effective programs be scaled up or adapted for new sites?

Sustainability

How can the sustainability of CVE programs be enhanced?

# Accelerating CVE: Key Recommendations

---

- Promote the development and evaluation of effective interventions for at-risk individuals & communities
- Promote the packaging of effective interventions together into multilevel programs that fit local context
- Promote the assessment of the effectiveness and implementation of CVE initiatives



# Contact

Stevan Weine  
smweine@uic.edu

**[www.start.umd.edu](http://www.start.umd.edu)**